

Explaining printing with or without bleed

In the Canon Webshop, you will find two types of print jobs: printing without bleed and printing with bleed. We explain the difference below.



If you choose to print without bleed, a **white border will always be visible** on the print, even if the image in your file extends to the edge. With 'Bleed printing' the image on the print runs to the edge.

Bleed margins and cutting marks in bleed printing

To obtain a bleed print, an small edge of the paper must be cut off on all sides. For this reason, the file must be at least 3 mm longer and wider than the final format of the print. We call this the **bleed margin or cutting margin**.

Example:

The file for a print on A4 (210 x 297 mm) must have the following dimensions:
 $210 (+ 3 \text{ mm left} + 3 \text{ mm right}) \times 297 (+ 3 \text{ mm top} + 3 \text{ mm bottom}) = 216 \times 303 \text{ mm}$.

To cut the printout to the correct format, the PDF file should preferably also contain **four cutting marks**, which mark the extra 3 mm space at the corners.

→ [View an example of a file with bleed margin and cutting marks](#)

How to create a pdf file for bleed printing

1. With a graphic design software

The best way to create a file with the correct settings, bleed and cutting marks is to use graphic design software such as **Adobe Indesign**. But there are also alternatives such as

Scribus (free) and **Affinity Publisher** (paid for macOS & Windows).

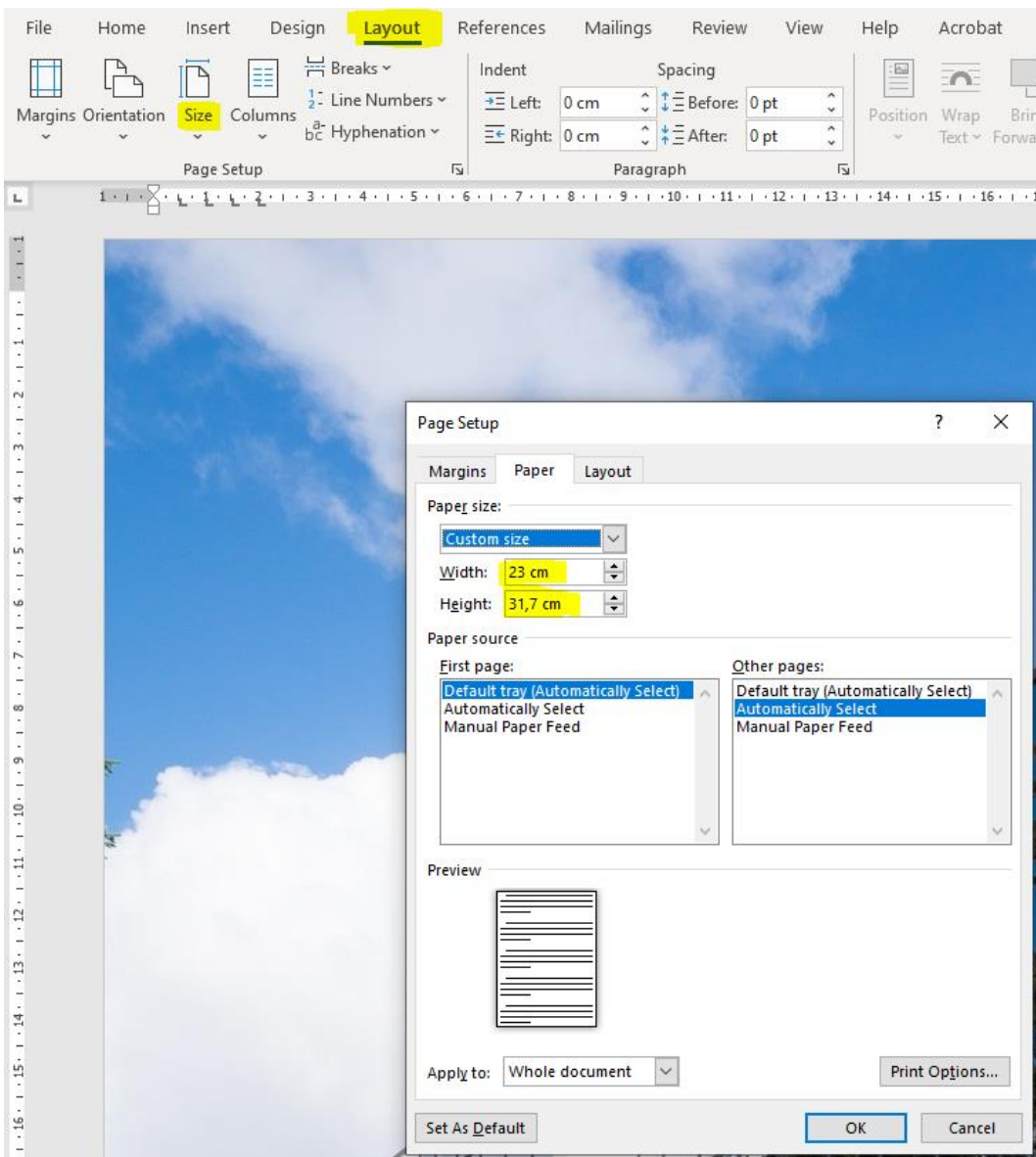
2. With MS Word

If you do not have any graphic software, you can also use Word.

Step 1: Adjust the page settings

Your page must be made slightly larger on all sides in order to be able to cut off an edge (the cutting margin). In the example below we have created a file that is 1 cm larger on all sides than the desired A4 paper size. [You can download the file here](#) and adjust it yourself if necessary.

PLEASE NOTE: we are really cutting off a piece of the image. Make sure that there are no parts of the image in the cutting margin that should remain visible.

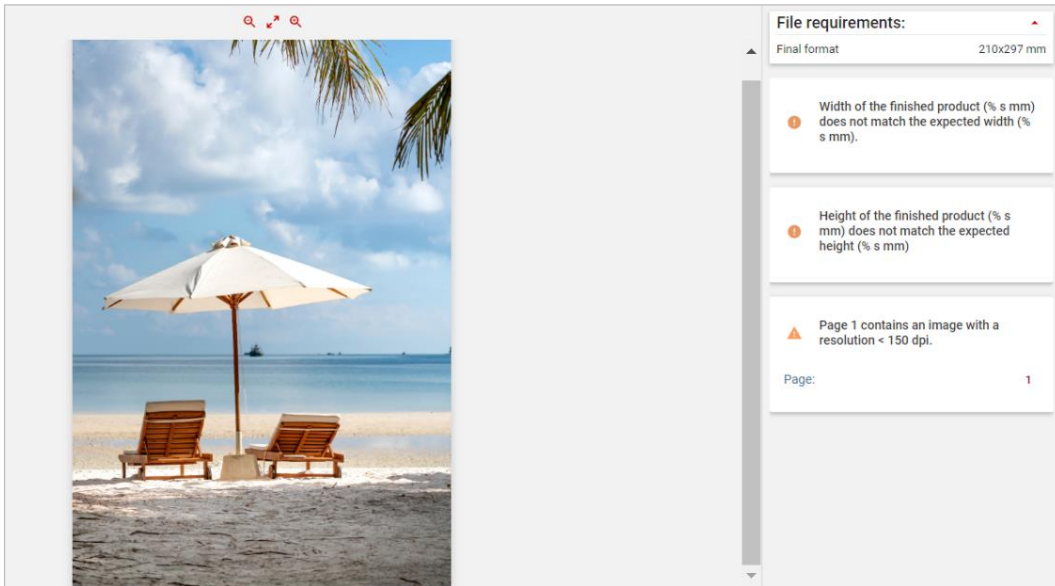


Step 2: Save the Word file as PDF

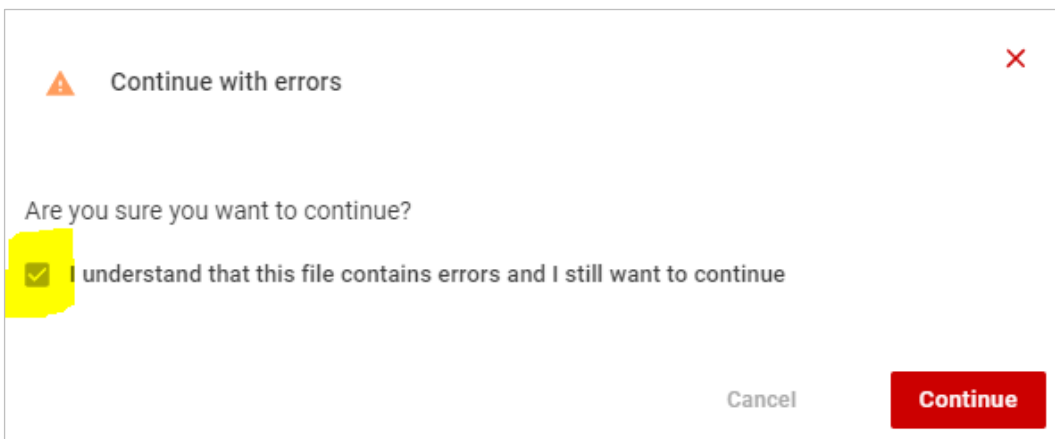
File > Save as > Choose file type 'PDF' > Save

Step 3: Upload the file in the portal: Printing with bleed

In contrast to files created with graphic software, you will receive some error messages when using Word. This is because the portal looks for graphic file properties in the PDF such as a 'trim box' or cutting marks ('bleed box'). These are not added in Word. You will also receive the message that the file is larger than the expected file format. These messages look like this:

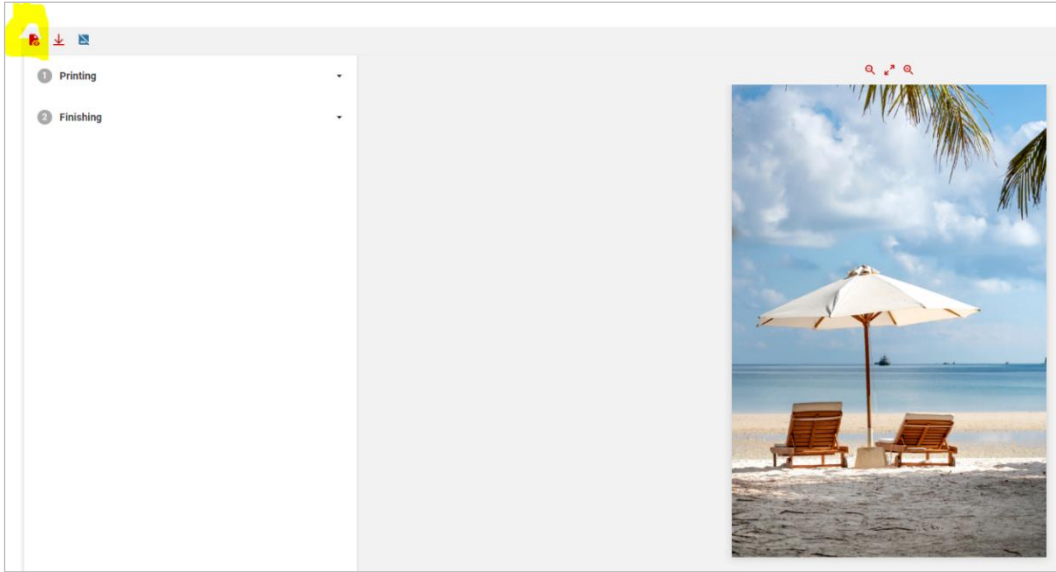


- You can ignore these error messages. Click on [**Continue**] and check that you understand what causes the errors.



- In the next step, click on the preview in the top left corner. The preview shows how the print will actually look and how much of the image will be cut off;





** The end **
